

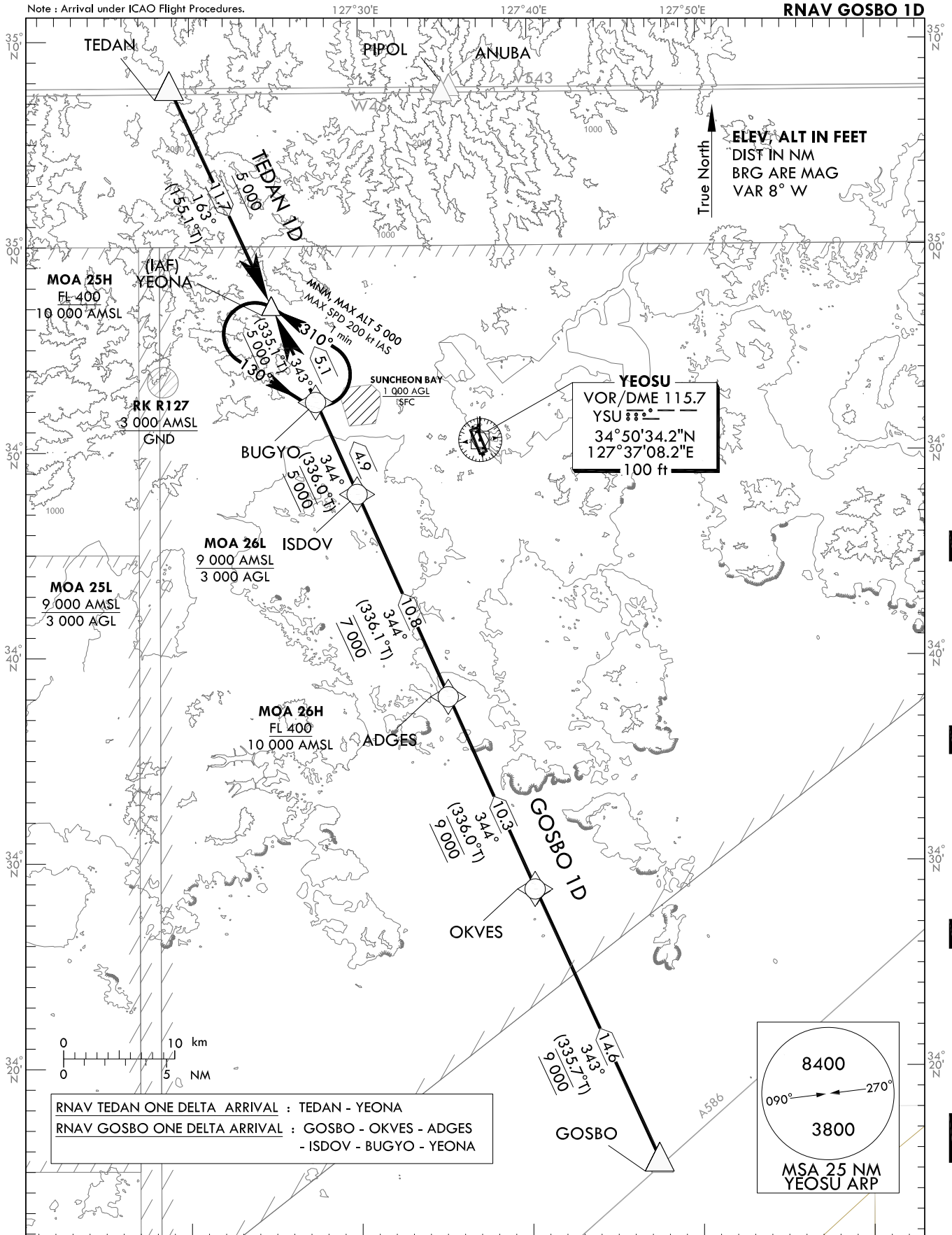
**STANDARD ARRIVAL CHART
INSTRUMENT(STAR) - ICAO**

TRANSITION ALT 14 000
TRANSITION LVL FL 140

SACHEON APP 135.4
YEOSU TWR 122.5
240.9

**YEOSU/Yeosu (RKJY)
RWY 17
RNAV TEDAN 1D
RNAV GOSBO 1D**

Note : Arrival under ICAO Flight Procedures.



RNAV TEDAN ONE DELTA ARRIVAL : TEDAN - YEONA
RNAV GOSBO ONE DELTA ARRIVAL : GOSBO - OKVES - ADGES
- ISDOV - BUGYO - YEONA

8400
090° ← 270°
3800
MSA 25 NM
YEOSU ARP

NOTE

1. RNAV 1 operation.
2. GNSS required.
3. ATS surveillance service required.

Change : Information of fix names(DANDO → ISDOV, KODOL → ADGES, HANSU → OKVES).

YEOSU/Yeosu (RKJY)
RWY 17
RNAV TEDAN 1D, RNAV GOSBO 1D
HOLDING PROCEDURE

AERONAUTICAL DATA TABULATION

Standard Instrument Arrival Procedure Coding Tables

RNAV TEDAN 1D												
Serial Number	Path Descriptor	Waypoint Identifier	Fly-over	Course/Track °M(°T)	Distance (NM)	Turn direction	Altitude (ft)	Speed (kt)	Coordinates	VPA/TCH	Navigation specification	Remarks
001	IF	TEDAN	-	-	-	-	-	-	35°07'43.8"N 127°18'52.1"E	-	RNAV 1	-
002	TF	YEONA	-	163(155.1)	11.7	-	+5 000	-	34°57'03.8"N 127°24'52.1"E	-	RNAV 1	IAF

RNAV GOSBO 1D												
Serial Number	Path Descriptor	Waypoint Identifier	Fly-over	Course/Track °M(°T)	Distance (NM)	Turn direction	Altitude (ft)	Speed (kt)	Coordinates	VPA/TCH	Navigation specification	Remarks
001	IF	GOSBO	-	-	-	-	-	-	34°15'16.8"N 127°47'34.4"E	-	RNAV 1	-
002	TF	OKVES	-	343(335.7)	14.6	-	@9 000	-	34°28'36.0"N 127°40'19.0"E	-	RNAV 1	-
003	TF	ADGES	-	344(336.0)	10.3	-	@9 000	-	34°38'03.0"N 127°35'14.0"E	-	RNAV 1	-
004	TF	ISDOV	-	344(336.1)	10.8	-	@7 000	-	34°47'56.0"N 127°29'55.0"E	-	RNAV 1	-
005	TF	BUGYO	-	344(336.0)	4.9	-	@5 000	-	34°52'26.0"N 127°27'29.0"E	-	RNAV 1	-
006	TF	YEONA	-	343(335.1)	5.1	-	+5 000	-	34°57'03.8"N 127°24'52.1"E	-	RNAV 1	IAF

HOLDING PROCEDURE												
Holding Identification	Path Descriptor	Waypoint Identifier	Fly-over	Course/Track °M(°T)	Distance (NM)	Turn direction	Altitude (ft)	Speed (kt)	Coordinates	VPA/TCH	Navigation specification	Remarks
RNAV TEDAN 1D	HM	YEONA	Y	310(302.8)	1	L	@5 000	-200	34°57'03.8"N 127°24'52.1"E	-	RNAV 1	-
RNAV GOSBO 1D	HM	YEONA	Y	310(302.8)	1	L	@5 000	-200	34°57'03.8"N 127°24'52.1"E	-	RNAV 1	-

Change : Information of fix names(DANDO → ISDOV, KODOL → ADGES, HANSU → OKVES).

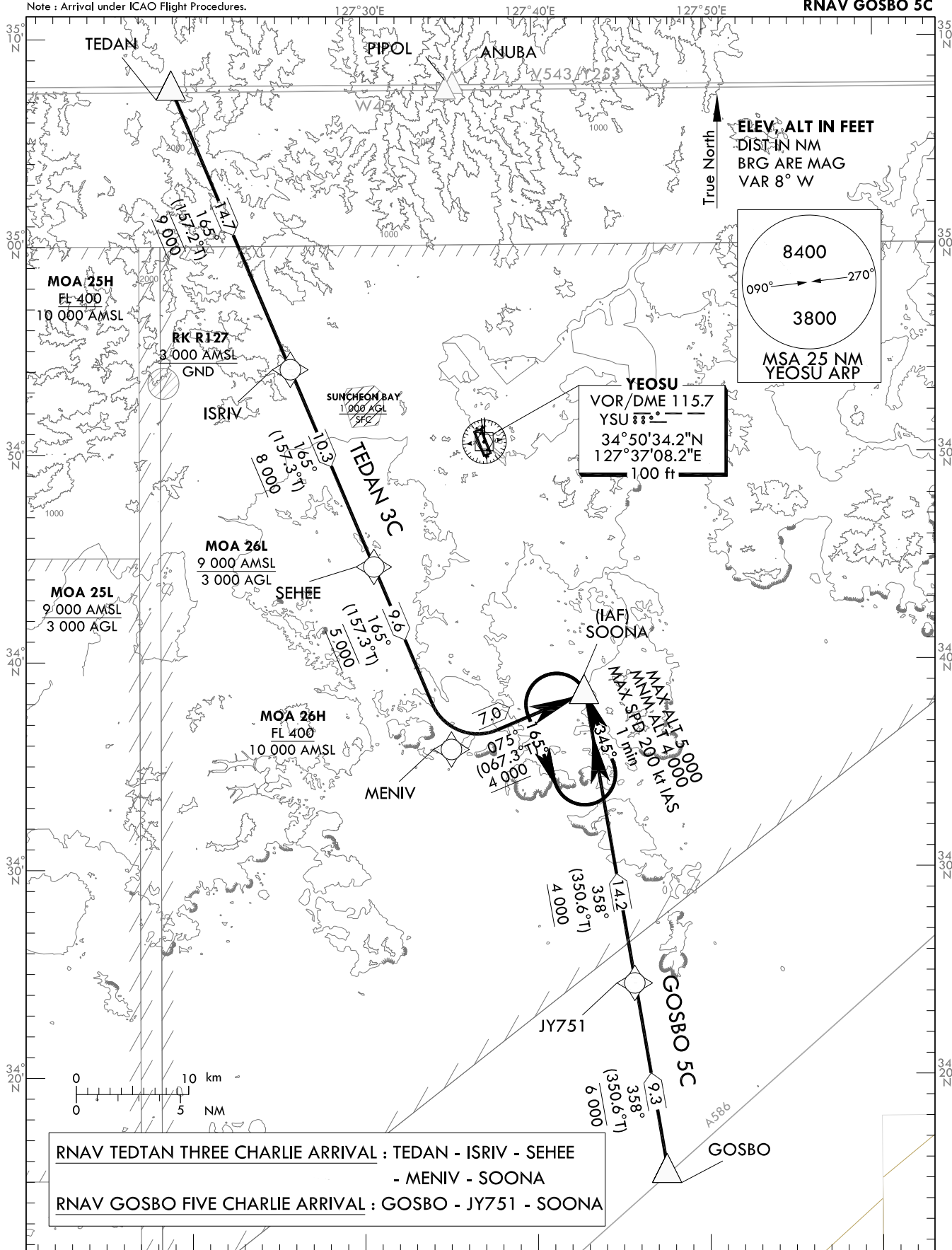
**STANDARD ARRIVAL CHART
INSTRUMENT(STAR) - ICAO**

TRANSITION ALT 14 000
TRANSITION LVL FL 140

SACHEON APP 135.4
YEOSU TWR 122.5
240.9

YEOSU/Yeosu (RKJY)
RWY 35
RNAV TEDAN 3C
RNAV GOSBO 5C

Note : Arrival under ICAO Flight Procedures.



NOTE

1. RNAV 1 operation.
2. GNSS required.
3. ATS surveillance service required.

Change : Information of fix names(SOLAN → ISRIV, PONTY → MENIV).

YEOSU/Yeosu (RKJY)
RWY 35
RNAV TEDAN 3C, RNAV GOSBO 5C
HOLDING PROCEDURE

AERONAUTICAL DATA TABULATION

Standard Instrument Arrival Procedure Coding Tables

RNAV TEDAN 3C

Serial Number	Path Descriptor	Waypoint Identifier	Fly-over	Course/Track °M(°T)	Distance (NM)	Turn direction	Altitude (ft)	Speed (kt)	Coordinates	VPA/TCH	Navigation specification	Remarks
001	IF	TEDAN	-	-	-	-	-	-	35°07'43.8"N 127°18'52.1"E	-	RNAV 1	-
002	TF	ISRIV	-	165(157.2)	14.7	-	@9 000	-	34°54'10.0"N 127°25'48.0"E	-	RNAV 1	-
003	TF	SEHEE	-	165(157.3)	10.3	-	+8 000	-	34°44'37.0"N 127°30'39.0"E	-	RNAV 1	-
004	TF	MENIV	-	165(157.3)	9.6	-	@5 000	-	34°35'46.2"N 127°35'07.9"E	-	RNAV 1	-
005	TF	SOONA	-	075(067.3)	7.0	-	+4 000	-	34°38'27.5"N 127°42'56.0"E	-	RNAV 1	IAF

RNAV GOSBO 5C

Serial Number	Path Descriptor	Waypoint Identifier	Fly-over	Course/Track °M(°T)	Distance (NM)	Turn direction	Altitude (ft)	Speed (kt)	Coordinates	VPA/TCH	Navigation specification	Remarks
001	IF	GOSBO	-	-	-	-	-	-	34°15'16.8"N 127°47'34.4"E	-	RNAV 1	-
002	TF	JY751	-	358(350.6)	9.3	-	-6 000	-	34°24'25.6"N 127°45'44.8"E	-	RNAV 1	-
003	TF	SOONA	-	358(350.6)	14.2	-	+4 000	-	34°38'27.5"N 127°42'56.0"E	-	RNAV 1	IAF

HOLDING PROCEDURE

Holding Identification	Path Descriptor	Waypoint Identifier	Fly-over	Course/Track °M(°T)	Time (min)	Turn direction	Altitude (ft)	Speed (kt)	Coordinates	VPA/TCH	Navigation specification	Remarks
RNAV TEDAN 3C	HM	SOONA	Y	345(338.5)	1	L	-4000 +5000	-200	34°38'27.5"N 127°42'56.0"E	-	RNAV 1	-
RNAV GOSBO 5C	HM	SOONA	Y	345(338.5)	1	L	-4000 +5000	-200	34°38'27.5"N 127°42'56.0"E	-	RNAV 1	-

Change : Information of fix names(SOLAN → ISRIV, PONTY → MENIV).